



THANK YOU

COLORADO COALITION FOR THE HOMELESS
ANNUAL REPORT 2013



Thanks to you...

DEAR FRIENDS

The Coalition produced exceptional results in 2013 because of support, leadership, and collaboration among compassionate and dedicated organizations and individuals like you. To simply say we are thankful would understate the importance of our work and your role in it.

We are profoundly grateful to you because you've enabled us to respond to more than 15,000 people who genuinely needed our help, and who themselves have valiantly worked to overcome the conditions that led to their homelessness. Four notable achievements stand out among our numerous programs and activities of 2013.

We launched the new **Fort Lyon Supportive Residential Community** in Bent County, Colorado. It represents state and local efforts to re-purpose the former Fort Lyon Veterans Administration Hospital to meet the addiction recovery needs of homeless individuals from across Colorado, with an emphasis on homeless veterans.

We began to secure financing for **Renaissance at North Colorado Station**, a new, mixed-income housing development in the Clayton neighborhood in Denver. Once complete, the transit-oriented project will include 103 apartment homes for homeless individuals and families and for those lower-income households in the community seeking affordable housing.

“ To simply say
we are thankful
would understate the **importance**
of our work and your role in it. ”

Residential instability increases risks for serious health problems, exacerbates existing illness, complicates treatment, and often exposes persons to further traumatization. In response, we pilot-tested a new integrated model of care at our **West End Health Center** to better meet the complex and specialized physical and behavioral health concerns of those we care for.

We also continued construction of the landmark **Stout Street Health Center** and **Renaissance Stout Street Lofts**. The project will expand by 50 percent our capacity to provide integrated care services and will also provide 78 units of much needed new housing for homeless individuals and families.

You will find statistics in this report that illustrate the scope and reach of our services in 2013. Each of these numbers represents a vulnerable person who deserves a stable, safe home and access to health care and other services, delivered with dignity.

You've helped. And with your continued support, we will persist in pushing forward lasting solutions out of homelessness, for every one of them.

Gratefully,



John Parvensky
President



Jay Brown
Chair, Board of Directors





Thanks to you... THEY **OVERCAME** HOMELESSNESS

Meeting Jesse and Lindsey today, you would never guess that a few years ago they were both struggling with addiction and living on the streets. "You wouldn't recognize me," Lindsey says. "I was like 100 pounds. The Coalition saved my life." Drugs brought the pair to the streets, but also kept them there. Jesse explained that drugs were the only thing that helped ease "the psychological and physical pain of being homeless."

Jesse and Lindsey thank the Coalition's **Housing First** program for providing the foundation for their new life. Housing First is designed to respond to the most acute need of chronically homeless individuals—housing. Once clients are housed, case managers are able to provide additional services that help clients improve their level of health and functioning and maintain housing stability. "Getting a safe environment is really important...especially if you're homeless on drugs," Jesse says.



Now that they've been sober for years and have a home to call their own, Jesse and Lindsey can look forward to the future and to raising their two children. They enjoy spending time in their garden. Each of the parents wants to go back to school. Lindsey would like to become a therapist and Jesse is considering a career in alternative energy. "The people at the Coalition are miracle workers," says Lindsey. "One of my goals is to give back. I haven't figured out how to do that yet, but I will. Thank you. Don't give up because people like us really need your help."

**“Thank you.
Don't give up because
people like us really need your help.”**

—LINDSEY



“THAT DAY CARE
HAS BEEN MY
EVERYTHING.”
—ANGELA

Thanks to you... HER KIDS ARE SAFE

Angela finally escaped a traumatic five-year marriage destroyed by constant episodes of domestic violence. She became homeless and struggled to support her two young children, Brent and Kailey. After a year of bouncing from shelters to friends' couches to motels, the family signed up for assistance with the Coalition. Today, they live in the Coalition's **Renaissance at Concord Plaza** apartments. "We're using this opportunity the way we're supposed to," says Angela, "I have lots of goals I'm working towards—getting a car, a job."

Brent and Kailey also attend **Renaissance Children's Center**. "When it comes to the Center, they are awesome," says Angela.

The staff know that homelessness influences all aspects of a child's development. The stress of transition can impact academic performance and social competence. A safe, stable environment is vital for children to develop the skills necessary to succeed. Therapy sessions and ongoing speech therapy have been essential for Brent and Kailey. Angela appreciates the extra support the Coalition provides—things like food boxes, transportation, and health check-ups and immunizations. "They've just been helping us right at the right times that we were needing stuff," says Angela. "That day care has been my everything."

Last Christmas was the family's first holiday in their new home. Describing the year before, Angela says, "There was nothing I could give besides 'Merry Christmas and I love you!'" But in the new apartment, Angela says, "To have our first Christmas here was awesome. I didn't even know how good of a cook I was! I had everything—pies, cakes, cookies, everything," boasts Angela. "'Cause it was my first one."



Thanks to you... HE HAS A HOME AND HEALTH CARE

A tragic loss early in Bruce's life sent him into a spiraling alcohol addiction. Decades of drinking eventually landed him on the streets. "When you're drinking, it's impossible to see how much you're hurting those around you, much less yourself," he says. In addition to alcoholism, Bruce suffers from chronic pain, depression, anger issues, and a disabled shoulder. After two years of homelessness, the Coalition helped him obtain an

apartment home at **Renaissance West End Flats** on West Colfax Avenue. Bruce is also able to walk out his front door and go downstairs to the **West End Health Center** to receive the medical attention he needs. There, he meets with an integrated care team that includes his Case Manager, Primary Care Physician, Nurse, and Therapist. Bruce has consistently attended his weekly appointments to meet

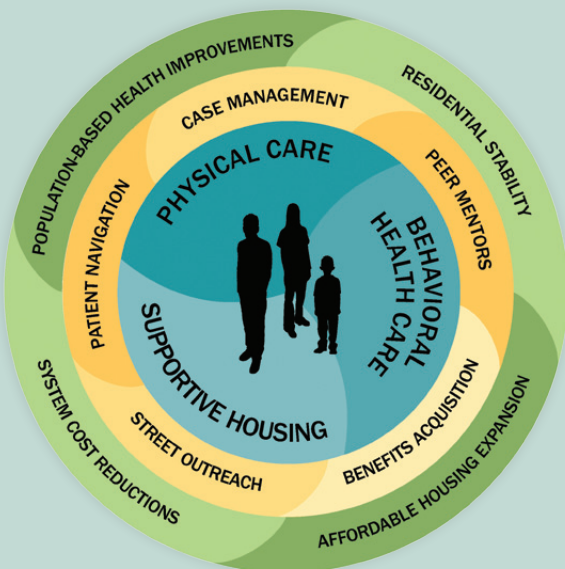


with his Case Manager. When Bruce was ready, she connected him with treatment and support services that enabled him to make one of the most important decisions of his life—to stop drinking. Bruce enrolled in a long-term program where he is acquiring the skills to maintain sobriety. He remains

“...everyone here at the Coalition has been a blessing. I’m extremely grateful.”
—BRUCE

involved in the Coalition’s **Men’s Group**, weekly therapy sessions, and meets weekly with a Coalition Peer Mentor.

Soon, Bruce will undergo replacement shoulder surgery and one day hopes to work again. The care that Bruce received from the Coalition has enabled him to make healthier choices in his life. He says he feels liberated from his need to drink, and supported in his sobriety by everyone on his team—from his Primary Care Physician to his Pharmacist to the Receptionist at the West End Health Center. “It’s just been a blessing, everyone here at the Coalition has been a blessing,” Bruce says, “I’m extremely grateful.”



The Coalition’s integrated delivery model responds to the specialized needs of homeless adults and children. The Coalition’s method combines delivery of patient-centered physical care (medical, dental, vision, and pharmacy with behavioral health care (mental health care and substance treatment services) and supportive housing.



“ I’m a **veteran** of the streets
as well as a **Veteran**.

I don’t think I can even show enough

gratitude

to the people here

for **what this has done for me.** ”

—CHRIS



Thanks to you... THEY ARE HEALING AND RECOVERING

The **Fort Lyon Supportive Residential Community**, opened in September 2013, is located at the former Fort Lyon Veterans Administration Hospital in Bent County, Colorado. The program provides recovery-oriented transitional housing combined with educational, vocational, and employment services for homeless individuals with substance abuse and mental health disorders. The program resulted from collaboration between state and local stakeholders to re-purpose the facility to meet the needs of homeless individuals from across Colorado, with an emphasis on homeless veterans.

The innovative approach allows residents to leave the community in which they continue to struggle with the cycles of addiction and homelessness, for at least 90 days or for up to two years, in order to help them attain sobriety and health stability. As a result, participants gain the resources necessary to achieve and maintain long-term recovery, stable housing, employment, and overall self-sufficiency.

“This place has shown me a better life, a new beginning, and a new me.”

—JULIA



COMMUNITY PARTNERS


- *Colorado Department of Local Affairs, Division of Housing*
- *Colorado Health Care Policy and Finance Authority*
- *Colorado Division of Behavioral Health*
- *Bent County Commissioners and Office of Economic Development*
- *Otero Junior College*
- *Lamar Community College*
- *Southeast Mental Health Group*
- *Prowers Medical Center*
- *Valley Wide Health Systems, Inc.*

Thanks to you...

WE HELPED MORE THAN **15,000** PEOPLE IN 2013.

INTEGRATED HEALTH CARE

13,323
PATIENTS



MEDICAL CARE
10,698
PATIENTS
37,150 VISITS

SPECIALTY CARE
490
PATIENTS
589 VISITS

1,562
CHILDREN
& TEENS RECEIVED
PEDIATRIC CARE

MENTAL HEALTH CARE
2,888
PATIENTS
28,525 VISITS

86,555 **Rx**
PRESCRIPTIONS FILLED

250 PATIENTS
RECEIVED
RESPITE CARE

DENTAL
1,291
PATIENTS
4,912
VISITS

VISION
963
PATIENTS
1,185
VISITS





HEALTH OUTREACH PROGRAM
1,090
PATIENTS
2,050 VISITS

VOLUNTEERS


 **126**
VOLUNTEERS

56,605
 **VOLUNTEER HOURS**

VETERANS


750 
VETERANS 
OF THE
U.S. ARMED SERVICES


HOUSING

 **2,300**
HOUSEHOLDS
OCCUPIED

78 NEW APARTMENT
HOMES **UNDER**
CONSTRUCTION

KIDS & FAMILIES

 **853**
FAMILIES
HELPED

144 
FAMILIES
HOUSED
139 FAMILIES HOUSED IN
RURAL COMMUNITIES

 **135**
CHILDREN
RECEIVED CHILDCARE

SUPPORT SERVICES

2,923 
PERSONS
RECEIVED CASE
MANAGEMENT **40,713**
OR OUTREACH DURING **VISITS**

 **320**
PERSONS RECEIVED
VOCATIONAL SERVICES

200 PERSONS WERE
PLACED IN
JOBS

Thanks to you... THOSE WHO LEAD

BOARDS & COMMITTEES

Colorado Coalition for the Homeless Board of Directors

Jay Brown, Chair
Jim Winston, Vice Chair
Peter Calamari, Treasurer
T. R. Reid, Secretary
Chris Bates
Darrell Brown
James E. Davis
Dan Grossman
Jeremy Hotsenpiller
James W. Hubbell
John Kelly
Randle Loeb
Karen Lowe
Meshach Rhoades
Thomas W. Snyder
TaRhonda Thomas
LoAn Vo
Leanne Wheeler

Consumer Advisory Board

Tanger Jones
John Kelly
Randle Loeb
Lori Malone
Rocco Smaldone
Gayle Van Loan

Renaissance Housing Development Corporation Board of Directors

John Parvensky, Chair
Bill Windsor, Secretary
Darrell Brown
Tom Jones
Benjamin Kuruvila
Randle Loeb
Grant Muller
John Pappas
Alan Robinson
Jim Winston

Resource Development & Marketing Committee

James Davis, Chair
Jaclyn Casey
Lisa K. Celandia
Jeremy Hotsenpiller
Randle Loeb
Laura Manthey
Jynx Messacar
Susan T. Miller
Suzanne Miller
Joel S. Neckers
T. R. Reid
LoAn Vo



LEADERSHIP

John Parvensky, President & CEO

Louise O. Boris, Chief Program Officer

Stanley Eilert, Chief Administrative Officer

Jill Farnham, Chief Financial Officer

Jennifer Forman, Vice President of Resource Development & Marketing

Bette Iacino, Vice President of Public Policy & Communications

Mandy Graves May, Vice President of Quality Assurance

Bill Windsor, Vice President of Housing Development

Tracy Carsten, Director of Human Resources

Elizabeth Cookson, Director of Psychiatry

Mary Lea Forington, Director of Integrated Health Services

James Ginsburg, Director of Fort Lyon Supportive Residential Community

Tim Marshall, Director of Residential Services

Mark Miller, Director of Rental Assistance

David Moore, Controller

Carol Niforatos, Dental Director

David Otto, Medical Director of Integrated Health Services

Jennifer Perlman, Director of Outreach and Engagement

Susie Street, Director of Family Support Services & Renaissance Children's Center

Jerry Valdes, Director of Property Operations

Roz Wheeler-Bell, Director of Emergency Solutions Grants & Rural Initiatives

Donors Organizations

7 Star Motel
 Agilent Technologies
 Albuquerque HealthCare for the Homeless
 Allosource
 Alpine Pool & Plaster
 America's Charities
 ARC Thrift Stores
 AT&T Employee Community Giving Program
 Bank Of America
 Barish Family Foundation
 Bent County Development Foundation
 Beta Health Association, Inc.
 Bienvenidos Food Bank
 Bioterra Constructors, Inc.
 BM Marketing, LLC
 Boettcher Foundation
 Bomar Painting, Inc.
 Capitol Heights Presbyterian Church
 Caring for Colorado Foundation
 Cherry Creek Insurance Group
 Chevron
 City and County of Denver
 City of Thornton
 Clinica Campesina Family Health Services
 Colorado Access
 Colorado Association of Code Enforcement Officials
 Colorado Chapter of the Association of Certified Fraud Examiners
 Colorado Community Health Network
 Colorado Housing & Finance Authority
 Colorado Institute of Massage Therapy
 Colorado State Bank and Trust
 Community First Foundation
 Concord Contract Furniture Services
 COPIC Insurance Company
 Crea Results, LLC
 Dalton Elementary
 Delta Dental of Colorado
 Denver Post Charities, a McCormick Foundation Fund
 Denverworks Inc.
 Dick's Sporting Goods
 Dish Network
 Dumb Friends League
 Echo Geophysical Corporation
 El Camino Tavern
 Emmett and Nancy Hart Foundation, Inc.
 Encana Cares USA Foundation
 EnCana Oil & Gas (USA), Inc.
 Enterprise Community Partners
 Enterprise Community Partners, Inc.
 EZMoney Loan Services #45005
 EZMoney Payday Loans #40154
 EZMoney Payday Loans #45026
 Faegre Baker Daniels Foundation
 Faegre Baker Daniels LLP
 FCI Constructors, Inc.
 Fidelity Charitable Gift Fund
 First Plymouth Congregational Church
 Franciscan Friars Holy Name Province, May Bonfils Stanton Memorial Fund
 Freeman Family Foundation
 Gaetano's Restaurant
 Gates Family Foundation
 GE Foundation
 Geropsych, PC
 Getz Foundation
 Girl Scout Troop No. 2811
 Give With Liberty
 Glenwood Insurance Agency
 Google Matching Gifts Program
 Great American Insurance Company
 Great-West Life & Annuity Insurance Co.
 Harmes C. Fishback Foundation Trust
 HDR Engineering, Inc.
 Heartland Charitable Trust
 Helen K. & Arthur E. Johnson Foundation
 Hill Foundation
 Hogan Lovells US LLP
 House District 4 Democrats
 Humphries Poli Architects, PC
 Hunter Douglas
 Hunter Electric, Inc.
 Hyder Construction, Inc.
 IBM Employee Services Center
 Industrial Specialties Mfg.
 Jay and Rose Phillips Family Foundation of Colorado
 Jewish Community Foundation of Colorado
 Jewish Foundation of Memphis
 Johns Manville Corporation
 JPMorgan Chase Foundation
 Kaiser Permanente Fund
 KeyBank Foundation
 Kiewit Corporation
 Land Title Guarantee Company
 Larson Distributing Co., Inc.
 Leatherwood Foundation
 Leslie Hindman Auctioneers
 Lewis Roca Rothgerber LLP
 LexisNexis
 LibertyGives
 Lions Club of Las Animas
 Lloyd J. and Eleanor R. King Foundation
 LoDo District Inc.
 Loretto Center
 Louis P. Singer Fund
 LT Environmental, Inc.
 M&M Engineering Associates Inc.
 Marycrest Franciscan Sisters
 Media Strategies and Research
 MHA Petroleum Consultants LLC
 Microsoft Matching Gifts Program
 Mile High United Way
 Morgan Stanley
 MorganStanley SmithBarney
 Mountain Family Health Centers
 Mountain States Structural, Inc.
 National Low Income Housing Coalition
 National Philanthropic Trust
 Network for Good
 Newmont Mining Corporation
 Northwest Eye Center
 Novo Coffee Bar
 Oakes Publishing Company LLC
 Oscar G. & Elsa S. Mayer Family Foundation
 Our Merciful Savior Ministries, Inc.
 Paris on the Platte
 PCL Construction Enterprises, Inc.
 Penn Schoen & Berland Associates LLC
 Pepsico Foundation
 Philanthropy Coop
 Pikes Peak United Way
 Plant Escape, Inc.
 Polsinelli
 Precision Medical
 Prior and Associates
 QEP Resources, Inc.
 ReadyTalk
 Regis Jesuit High School
 Restoration Community Church
 Reuters America, Inc.
 Rich Products Corporation
 Richard James Phillips & Company, LLC
 Rifkin Foundation
 Rocky Mountain Rollergirls
 Rudy and Alice Ramsey Foundation
 SAFETGARD
 Safeway Foundation
 Salis International Inc.
 Salud Family Health Centers
 Sargent Bickham Lagudis LLC
 Schlessman Family Foundation
 Schwab Charitable Fund
 Scott Edwards Architecture LLP
 Shells and Sauce
 Shuman Law Firm
 Sit Investment Associates Foundation
 SM Energy Company
 Sooper Credit Union
 SoRewarding LLC
 Spondulinx, LLC
 St. Andrew United Methodist Church
 St. Andrew's Episcopal Church
 St. Catherine Greek Orthodox Church
 St. Charles Capital, LLC
 St. Frances Cabrini Parish
 St. Matthew's Episcopal Church
 State of Colorado
 Stone Concepts, Inc.
 Strad Energy Services
 Strear Family Foundation, Inc.
 Strings Restaurant
 Susan G. Komen for the Cure
 Table 6
 Temple Hoyne Buell Foundation
 The Brown-McNitt Family Fund
 The Campbell Foundation Fund
 The Colorado Health Foundation
 The Colorado Trust
 The Denver Foundation
 The Hannon Law Firm, LLC
 The Jess & Rose Kortz and Pearle Rae Foundation
 The John and Sophie Ottens Foundation
 The Law Office of Neil O'Toole PC
 The Lobby
 The Nature Conservancy
 The Nord Family Foundation
 The Piton Foundation
 The William B. O'Rourke Foundation
 Trillium
 U.S. Department of Agriculture
 U.S. Department of Health and Human Services
 U.S. Department of Homeland Security

U.S. Department of Housing
and Urban Development
U.S. Department of Justice
U.S. Department of Veterans Affairs
UC Boulder Department of
Psychology and Neuroscience
United Eye Centers, P.C.
United Way of Central and
Northeastern Connecticut
United Way of Central Indiana
United Way of Central Maryland
United Way of Greater Philadelphia
and Southern New Jersey
United Way of Metropolitan Chicago
United Way of Tri-State
U.S. Bancorp Foundation
U.S. Bank
Valley of the Sun United Way
Visa GivingStation
VizualEyes Ltd
Wells Fargo Bank
Wells Fargo Community
Support Campaign
Wells Fargo Foundation
Western Union Foundation
Xanterra Parks & Resort
Xcel Energy Foundation
Yahoo! Employee Funds
Young Philanthropists Foundation,
Penny Harvest

\$10,000–\$19,999

Jay Brown and Allison Lee
John J. and Bonnie L. Capone
Montgomery C. Cleworth
Sean Connelly
Donald and Patricia Cook
Jane C. Hays
Leif and Leslie Houkom
Horace S. Kenney III
Gergory J. and Donna Kerwin
Susan T. Miller and Joseph M. Wojteczko
John and Suzanne Oro
Will H. Paterson

\$5,000–\$9,999

Beatriz Bonnet and Michael O'Connor
Hank and Mary Buschmann
Eileen M. Byrne
Cristen and Peter Calamari
Laurence J. and Michele J. Chang
Catherine P. Cole
Stephen Cumella and Cindy Carothers
Richard and Ze Deane
Ruth Falkenberg
Matthew and Livie Grogan
Douglas R. and Kerry F. Harris
Harris Charitable Fund
Martin B. and Carol J. Hidalgo
Jeremy A. Hotsenpiller and Elisa Ruybal
Gregory B. and Patricia H. Hueni
Joel B. Javer
Darlene T. Johnson
The Larned A Waterman and
Paul S Mesard Family
Karen Lowe and Jim Lattanzio
Margaret L. Lukas
Peggy McMahon
Christopher B. Min and Amy E. Fischer
David E. and Kirsten M. Morgan
David and Mona Murray

John Parvensky and Tenley Stillwell
Sara L. Peyton and Richard J. Bottjer
Randy Pharo and Joey Porcelli
Fred L. and Rosemary A. Pittroff
Gary and Chris Pon
John A. and Lynn E. Raber
T. R. Reid and Margaret McMahon
Julie M. Sutarik
The Larned A. Waterman and
Paul S. Mesard Family Charitable
Lead Trust Fund
Jim B. and Judy J. Winston

\$2,500–\$4,999

John and Mary Bayard
Mike Bogus
Charlie Burns
Jeffrey and Kristie Chamberlain
Robert J. and Kathleen A. Clark
David Clausen
Marilyn R. Collister
John P. and JoAnn G. Congdon
Andrew and Kathleen Conneen
Robert F. and Nancy L. Connor
Elizabeth Cookson
James C. and Karen E. Crain
James Davis and Jane Cameron
David and Trish Gutierrez
Norman D. and Pamela E. Haglund
Annie Cruse and Kevin Hannon
Christopher and Ginger Herndon
James W. Hubbell
Barry Keene
Kathleen Kelley
Glenn T. and Sheryl G. Kinney
Thomas and Barbara Kraujalis
Tim Macdonald and Jodi Blomberg
David and Bonnie McCay
Wyoma Berrier
Joel and Kimberly Neckers

**Donors
Individuals**

\$20,000 +

The John and Sheila Allen
Family Foundation
Craig and Marcia Cohen
Alison George and Eric Voogt



Warren R. and Pamela J. Neufeld
Ken R. and Juli R. Parrott
Daniel K. and Susan A. Paulien
Fayre Ruszczyk
Wagner and Annalee Schorr
Thomas Snyder and Lisa Scalpone
Stanley F. Siefer
Jerry F. and Julie A. Sobetski
Jeff and Cheryl Swinehart
Marion L. Tobin

\$1,000-\$2,499

Andrew Amend
Bob Ardalan and Leah Crews
Dan and Patricia Arvizu
Patricia Baird
Neiel D. Baronberg
Mary Ellen Becker
Michael L. Benedict
Jennifer Bettridge
Thomas and Cathy Beyer
Jamie Bittle
Twyla M. Boe
Harry and Peggy Bogus
Thomas H. and Sara L. Bradbury
Barbara and John Brant
Marc and Claudia Braunstein
David and Janet Britson
Thomas J. and Mary F. Brook
Everett W. and Carolyn L. Brown
Wesley A. and Linda L. Brown
Trevor and Margaret Brown
Stanley R. and Marilynn M. Brown
Christopher and Laura Brown
Sarah and Austin Buckman
Donald H. and Juanita A. Burkhardt
Keith S. and Lindsay R. Campbell
Warren Capell and Sarah Faubel
Douglas E. and Caroline C. Carlile
Paul M. and Jessica M. Carollo
David and Tracie Castanon
Michael K. and Kimberly L. Cavanagh
John R. and Cynthia A. Chase
Cindy Clover and Lee Clark
Adam and Mindy Cohen
Allan Cohen
Robert D. Coombe
Patrick and Rennee Coschignano
Raymond P. Costello
Ronald R. and Phyllis B. Covey
Michael and Tammy Crader
George B. and Marion G. Curtis
David E. and Helen L. Damouth
Thomas M. Dethlefs
Mark and Katharine Dickson
John F. DiCola and Linda R. Redding
Mark Eddy
Phil W. and Lisa G. Ensign
Randall and Beth Ferguson
William Fitzgerald
Mark Fitzgerald and Karen Jenni
Andrew W. and Jennifer A. Fitzpatrick
Peggy Florio
George B. and Jeri L. Flynn
Robert C. and Darcy D. Folzenlogen
Daniel J. and Jennifer N. Forman
William and Fairy Gage
Patrick and Deborah Galaska

Ann E. Garner
David L. and Laurie E. Gaspar
Tracie D. Giargiari and James S. Hixson
David M. Gillilan
David J. Glynn
Vatcharin Goare
Paula Gordon
Timothy A. Green and
Susan M. Porter-Green
Elizabeth Grinevics
Robert K. Gruber
Robert A. and Jean M. Gryzmala
Michael S. and Keana K. Hall
Bruce and Sharon Hann
Karen K. Harrington
Russell K. and Susan E. Haskell
Edward P. Havranek and Janis L. Johnson
Andrew L. Loizeaux and
Lynn E. Hawthorne
Virginia B. Heddens
Virginia A. Hersch
James and Martha Hoffman
Shawn E. and Evon S. Holladay
Graham E. and Catherine P. Hollis
Mike and Mary Beth Homiak
Chevis F. and Jan Horne
Barry B. Hughes
Anita M. Johnson
Lynn A. Johnson and Daughters
Stephen J. and Wendy W. Kaeuper
Ed and Cynthia Kahn
Mildred M. Kasten
Michael Kehoe
Gregory P. and Sherlyn M. Keiling
Michael D. Kelech
Ann Marie Kennedy and Steve Miller
Jane A. Kennedy
Alan A. Kenney
Barry E. and Linda A. Koritza
Donna C. Kornfeld
Gregory and Lauri Krysl
James R. Lafollette and
Patricia J. Blumenthal
Ron Laeyendecker
Christopher and Susan Lane
Sandra L. Lane-Daigle
Nadine Lee and Theodore Krull
Robert T. Levi and Mary J. Janiszewski
Bernard and Lory Levinger
Nancy E. Livingston
Timothy L. Lodico
Steven and Elaine Lowenstein
Lawrence U. and Beverly J. Luchini
Patricia and Ted Ludlam
Kristin and Matthew Lupfer
Sarah D. Lynch
David and Catherine Manchester
Nancy L. Martin
Patrick J. Marx
Ross S. and Arline C. Marzolf
Diane J. Mayer
Carter and Constance McClintock
Nancy McGee
Donald O. and Carleen A. McIntyre
Michael and Sue McKaig
Stephen and Lisa McKean
Thomas C. and Jana R. McKee
Guy M. and Kathy L. Mendt

Jane R. and Joseph E. Meyer III
Martin Miller
A.J. Miller
Jay P. Miller
Scott A. Miller
Carrie Lamitie
M. Robert and LeeAnn Morrill
J. Stephen Mott and Melba A. Stofka-Mott
Jan Myers
Marcia E. Naiman
Philippa Narog
David Nemovitz and Amanda Tessar
Newton Family Fund
Keith L. and Pamela L. Niemitalo
Robert and Geraldine Norris
Madeline O'Brien
James A. and Carolyn M. O'Donnell
Charles and Juanita Oppgaard
Malcolm Packer
Gary L. Parham
Donna Parker
Michael Parven
Kevin Paul and Melanie Lunsford
Linda and Dale Petkash
Freddie W. and Marisa A. Peyerl
Val J. and Marcia T. Pietrasiewicz
William H. and Marilyn M. Plummer
John and Barbara Plungy
Sandra L. Potter
Andrew Prinsen
Brit Probst
Joan H. Prusse and Robert E. Musgraves
Susan A. Putland
Nancy and John Rawls
Troy Rawson
Richard Regan
Rob and Barb Reilly
Mark H. and Barbara L. Risner
Donald E. and Joanne A. Roll
Richard and Mary Rose
Barry Rosenberg and Lee Fisher-Rosenberg
Valerie I. Rottach
John and Debbie Sakys
Ilan and Andrea Salzberg
Nedra R. San Filippo
Nichol and Domenic Santilli
Bruce W. and Martha E. Sattler
Charles F. Savage
Mary Ellen Scanlan and
George F. Blankenship
Robert D. and Kimberly J. Schork
Nick Schoville
Gary J. and Gloria A. Seib
James T. Sewell
Kathleen Sgamma and Jon Gamm
Shamos Family Foundation
Eileen M. Sharkey
Rosemary Margaret Shearer
Daniel M. Shurz
Gary Sidder and Francie Steinzeig
Edward E. and Jean E. Simon
M.W. Slezak and D.M. Wilken
Jennifer R. Smith
R.R. and Anne Snyder
Buhm Joon and Chiyon Choe Sohn
Charles and Roberta Speltz
Robert Squires and Penny Holt
Richard J. and Virginia E. Srednicki

Robert and Marianne Stofac
 Beatrice Taplin
 Christopher Taravella and
 Kathleen Kerrigan-Taravella
 S. Lee and Kathryn Terry
 Charles and Jennifer Thornton-Kolbe
 Larry and Ginger Underwood
 James Vader
 Richard and Janette Verhey
 Bernd and Emily Vilkus
 Laura A. Wade
 Joseph E. Wagner
 Salman Wakil
 Stephen Walker
 Douglas and Katie Warnecke
 Douglas and Sandra Warriner
 Dagmar and Daniel Warvi
 Scott A. Webber
 Steve Zansberg and Lisa Weil
 Susan Weinstein
 Gari G. Westkott
 Dennis G. and Pamela J. White
 Stephen White and Rose Kauffman
 Kelli K. Whitehall and John B. Davis Jr.
 Dan Willetts
 Mark Wixsom
 Andrew and Jamie Woglom
 Joe Woodward
 Nancy J. Woodward
 Matthew M. Wright
 David J. and Debbie S. Younggren
 James R. and Janice K. Zapapas
 Mary E. Zinn

\$500-\$999

Alice Suzanne Hamilton Trust
 Gerald L. and Carolyn A. Anderson
 Dennis T. Anipen and
 Kathryn M. DiGiacomo
 Donald L. and Cynthia J. Avis
 Gilbert B. Barker
 Nathan and Carla Beal
 Richard Becker
 Ty and Nancy Bell
 Barbara A. Benedict
 Edward M. and Karin J. Bennett
 Vina Sue Bishop
 Tom J. and Doris E. Blyth
 Lawrence and Louise Boris
 Fred P. Bramhall and Mary A. Clark
 B. Lawrence and Joan S. Brennan
 Rebecca A. Brinkman
 Joseph J. Bronesky
 Brenda Brown
 Winifred H. Brown
 Perrie B. Bruce
 Grace M. Buckley
 Margaret Burns
 Larry J. and Ethyll M. Call
 Sharla J. Carlson
 James S. and Marjorie B. Carroll
 David Casados
 Michael Casey
 Brian and Julie Casey
 Henry N. and Janet S. Claman
 George F. and Mildred W. Coughlin
 Nancy Cowen
 Phyllis Cox

Chris and Minou Cramer
 Jeffrey J. and Katherine E. Crawford
 Lonnie E. and Loreen A. Crosby
 Rachel Cuellar
 Philip A. Cummings
 Jeffrey and Shannon Davine
 John B. Davis Jr.
 William and Kathleen Davis
 Dolores Dayhoff
 Mildred E. DeSmet
 Craig and Jennifer Dethmers
 Cutberto Diaz
 Cynthia Diblik
 Krista Dillion
 Michael N. Dittmer
 Josiah and Vivian Dodds
 M.J. and T.L. Dommermuth
 James K. and Christine P. Donaldson
 Dean D. Dowson
 Daniel L. and Mary C. DuBois
 Warren and Diane Eckloff
 William H. Engelbach
 William and Nancy Esterbrook
 The Eugene and Barbara
 Sternberg Family Fund
 Ernest F. Fazekas and Susan R. Mullen
 Tom and Barbara Feige
 Richard A. and Elizabeth F. Fieman
 Norbert H. and Linda M. Frueh
 Lance B. Gatrell
 Geoffrey Genz and Linda Bolander
 John C. Geyer
 Ted M. Gill
 Neil M. and Mary Ann Goff
 David Goldberg
 Walter and Julie Goldberg
 Jon S. and Cynthia L. Goldman
 Barry and Thorey Goldstein
 Stephen P. and Cheryl A. Gottula
 Brian A. Gregg
 Lyle L. and Janet M. Grimmer
 Daniel Grossman and Robin Koenigsberg
 Todd and Cynthia Grover
 John and Carol Grudis
 Brian P. Kurzel and Sasha M. Gubser
 Steven R. Gunberg
 Donald and Debra Gwinner
 James and Laura Hahn
 James Halpenny
 Mark S. Hanchez
 Ricky and Melanie Harrell
 Bonnie Harris
 Donald and Cheryl Hartman
 Edward F. and Stephanie V. Harvey
 Constance L. Hauver
 Gary A. Hayes
 Richard W. Healy
 Ryan Helmer
 Donald R. Hembre
 Carl Hering and Elaine Enarson
 Marthann Hinson and Daniel Joslin
 Darrow Hoek
 Richard E. Hoffman
 Wayne T. and Amy S. Hoffmann
 Roy P. and Patty A. Hoinville
 Christopher J. Holland
 Kirk and Carolee Hornbuckle
 Douglas and Debra Hoskinson

Mark I. and Joan P. House
 Margaret Terzaghi Howe
 D. Richard and Karen Tramm Hyde
 Sami Ibrahim
 Carol Irwin
 Christopher H. and Patricia A. Isensee
 J.K. Mullen Foundation
 Gail Johnson and Steve Saeger
 William F. and J. Pauline Johnston
 Matthew W. and Diana Z. Karowe
 Thomas J. and Mary L. Kean
 Jill Kenney
 Rita Killam
 Tom Kirkpatrick
 Melvyn and Roberta Klein
 Beth Krauss
 Anthony Krupa
 Bob and Cynthia Lamb
 Thomas D. Lance
 John Allen and Shannon Levitt-Allen
 Peter Strong and Nancy Litwack-Strong
 Jan Longdale
 J. Kenneth Malo Jr.
 John C. and Leslie A. Malone
 Kirk M. Mason
 Jeffrey and Kathy Mather
 Dan Matlock
 Donald McClelland II
 John E. and Patricia A. McDermott
 Erick B. McElwain
 John McGovern
 Dennis G. and Vivian L. McMullen
 Janet L. Melson
 Laura Michaels
 Fred L. Migliorini
 Wilfred and Jeannine Miles
 Steve Stutzman and Anita Miller
 Rebecca Mills
 Laurie A. Mitchell
 David A. Mobley
 Annette Montoya
 Kurt Moore
 Karen and Jody Morrison
 Robert A. and Michelle J. Morrioni
 A. Gilbert Mueller
 Grant Netzorg
 Gordon Netzorg
 Andrew Nill and Carol Zapalowski
 James and Mary Jean Nussbaum
 Neil B. and Barbara A. Oberfeld
 Elaine M. Olson
 Eric A. Olson
 Paul and Tricia Olson
 Neil D. and Sharyn E. O'Toole
 Perry C. Peine
 Trent J. and Margina D. Pingent
 Hugh R. Pitcher
 Donald H. Poeschel
 Diane M. Poulter
 Roland Quast
 Lucille M. Queeney
 Susan Grant Raymond
 Jack Real and Suzanne Lavin
 David G. and Patricia A. Reese
 H.H. and Carol A. Reitmeyer
 Robert B. Renfro II
 Brent and Annie Reschak
 Reid T. Reynolds

JoAnn Rivera
 Patricia B. Roberts
 Mark Roeder
 Mary Ann Rose
 Yanita Rowan
 Donald Sack
 Jose P. and Carla A. Salazar
 Stephen D. Saul
 Paul J. and Rita K. Saunders
 E. Jane Schmitz
 Ronald and Laura Sells
 Rodney and Paige Sgrignoli
 Timothy J. and Annie L. Shanahan
 John and Patricia Shively
 Nathan and Holly South
 Crista C. Spears
 William V. and Wendy S. Speckman
 John and Holly Jo Sprackling
 Mike St. John
 Philip H. Stark
 Ruth Stark
 Amy Starks
 Meg Steinborn
 Patricia H. Steiner
 Chris A. Stickline and Kelley C. Roach
 Don and Annette Stott
 Shirley Strakal
 John M. Taitt
 Kay Tennant
 Alan and Loujuana Terry
 The Eugene and Barbara Sternberg
 Family Fund
 Michael S. Theis
 Ryan and Michele Tierney
 Matt Treinen
 Karen S. Truesdell
 Michael and Vicki Van Portfliet
 Sandra L. Van Portfliet
 Mark C. Vappi
 Blaine E. Versaw
 Gavin Wahl
 Julie A. Wakefield
 John M. Walker
 Robert M. Walker
 Jackson P. and Hilda C. Ward
 Marlin and Ann Weaver
 Dr. Anne Goldberg Wernimont
 Barbara A. Wetzal
 Richard Wagner and Barbara Whalen
 William and Mara White
 Loreta Whitney
 Christine L. Wilger
 Michael F. and Anita M. Winter
 Bruce Wolff
 William and Kathryn Wood
 Kim and James Woodruff
 Frank and Deb Wright
 Carle Zimmerman and Rita Derjue
 Albert Zweig

\$250–\$499
 Amanda Ackman
 Marlene C. Adam
 James Albin
 Roy Alexander
 Miles N. Allen III
 Elisabeth Arenales
 Jenni Aronson

Charles R. Aschwanden
 Theresa A. Atkins
 Brian S. and Laura A. Bacak
 Andrew Baker
 Joseph and Nancy Baker
 Tim Baldwin
 Majorie Baumert
 David W. Bell
 Bruce Bennett
 David L. Berman
 Gary G. Bird
 Barbara J. Bisceglia
 Andrea Blaschke
 Leah Blumenthal
 Lee A. Bollacker
 Philip Braaten
 Margaret M. Brahm
 Barbara Brannen
 Betty L. Bruce
 Colleen Bryan
 Kenneth G. and Bernice D. Bueche
 Bud and Kristi Bullard
 Glen E. and Janet K. Burmeister
 Jay and Lois Busch
 Kay Butler
 Jentry W. Byleveld
 John and Cynthia Canaday
 Elizabeth J. Capdevila
 Gerald and Elizabeth Caplan
 Helen Capps
 Mark Carlin
 Mark and Deborah Carter
 James Chapel
 Harold L. and Vicki P. Chapel
 Lance Christmann
 Joseph P. and Jana L. Clark
 Patricia E. Clark
 Christian J. Clayton
 Heath Coffman
 Wilton Cogswell IV
 Keith and Kelsey Connaghan
 George N. Cowen Jr.
 Edith R. Crook
 Richard O. Curley Jr.
 Thomas and Faith Dahl
 Perry Daughtrey
 Judith Day and Rebecca Howard
 Velma R. and Billie Ann Day
 Lynn Della-Betta
 Spencer Denison and Kara Horner
 N. D. and K. L. Dermer
 Diana DeSantis and Mark Kachmer
 John A. and Patricia A. DeSisto
 Anna Maria Desmarais
 Steven L. and Cindy F. Diamond
 Timothy Dolan
 John M. Dolan
 Eilyn M. Domnik
 Jonathan and Joanne Douglas
 Andrew H. and Estelle T. Drance
 Douglas M. Dreher
 Hilary Dryden
 Robert W. Duckles
 William M. Dudley
 Kent Epperson
 Laura Excell
 Vicki L. Faber
 Gary L. and Kathleen M. Falk

Richard G. and Eileen F. Feret
 Joshua Fine
 Todd and Jamie Fink
 Donald G. and Carole S. Frickel
 Kevin and Jill Fricker
 John and Jeneane Furstenberg
 Sidney B. and Caleb F. Gates
 Jacquelynn Gerlach
 Allison Gleichman and Ben Schumacher
 Kourtney Goebel
 Ronald J. and Mary K. Goodwin
 Jerry and Carole Gossner
 Robert S. Graham
 Gerald M. Grammens and Mary E. Webber
 Timothy D. and Melanie M. Grein
 Thomas S. and Ruth E. Guins
 Stuart S. and Patricia A. Gunckel
 Gina Guy
 James and Joann Hall
 Charles and Linda Hamlin
 James Hankins
 Jack G. Hansell
 James and Christi Harman
 Joseph Harpring
 Robert Hartnett and Family
 Joan M. Hay
 H. Michael Hayes
 Harrison F. Hayes
 David M. and Colleen M. Helmreich
 Ralph L. and Margaret C. Henderson
 Richard and Pamela Hennessey
 Douglas R. and Madalyn B. Henninger
 Becky Henrekin
 Mary Hess
 Robert Hickler
 Kevin R. and Margaret K. Higgins
 Susan Hills Rose
 Douglas E. and Janet M. Hodous
 Bradley J. Hoffner
 Anthony Hogans
 Christopher J. Holland
 Richard A. and Frieda K. Holley
 Patricia Horoschak
 Janice Huang
 Cristi J. Hulse
 Sean Isaacs
 Jason Jackson
 Rita S. Jacobsen and Sandra J. Winthrop
 Phyllis J. Jacques
 James G. Jaeckel
 Lorraine and Helen Jakubowski
 Dr. Gary Alan Jamell
 Jennifer L. James
 Marcella S. Jarema
 Richard J. and Susan A. Jaworowski
 Dale R. Jensen
 David R. and Karen R. Johnson
 Cheryl Jones
 Franklyn N. and Marti J. Judson
 Andrew Kalish
 Kelli J. Kasik
 Cornelia H. Kellogg
 Jacqueline L. Kennedy
 T. Timothy and Teresa G. Kershisnik
 Marilyn V. Ketcham
 Thomas B. and Patricia N. King
 Jacqueline King and Joseph Conti Jr.

Harold and Debbie Klawitter
Dennis G. Kruger
Warren E. and Betty A. Kuehner
G. H. and S. H. Lambertson
Eric M. Lane
Chris and Olga Laursen
Michael Levine-Clark
Mark R. and Linda S. Lewis
Sally Lewis
Edward C. and Carol D. Lobato
Lee and Tracy Logan
Benjamin S. Luey
David A. Mack
Philip J. and Carlene H. Maher
Shelley Marquez
Brett C. and Stephanie M. Martin
Tony Masingale
Barbara Masoner and Scott Goodman
Connie G. and Patti A. McArthur
Cormack and Kimberly McCarthy
James McCotter
Elizabeth McKelvey
Lawrence and Marjorie McKenna
Gregory McKenna
Robert H. and Mereth M. Meade
Tom and Lori Menk
Nancy Menz
Ann C. Merrill
Jynx Messacar
Richard and Sharon Mitchell
Steven G. Montague
Peter and Audrey Montoya
Allison Moody and Susan Parks
Dave Moore
Douglas G. and Laura B. Moran
J. Gregory and Karin E. Morrell
Stephen A. and Jeannie K. Morris
Brian S. Morrow
Mary Louise Mosley
Dr. Jane F. Mountain
Darby C. Muller
Rachelle Naishtut
Janice R. Neleigh
William P. Nelson
Christiana Nelson
Randy and Renee Nickerson
David and Lee Ann O'Brien
William D. Ohs
William M. and Diane L. Ojile
Brian and Mary Olesz
Linda Olsen
Kent and Elaine Olson
Kimberly A. Ostrin
Richard T. Packard
Cheryl Painter
James Palenchar and Lizabeth Lynner
John and Eileen Pappas
Michael S. and Therese T. Paranka
Lee Patton
Catherine A. Peraino
Melinda Percell
Barry Permut
Daniel Peters
David A. and Diana J. Peters
Matthew A. and Janelle L. Pflieger
Joel Pollack and Abby Ferber
James H. Popejoy
Daniel Poremba

Kathleen Post and Marvin Schwarz
James Poturalski
Brandon and Alicia Prescott
George Quick and Jaycee Chinn
Elisa Z. Ramirez
Angela Ransom
Sarah Rasmussen
Stephen E. Read
David Reed
Mark and Clare Rhine
Roberta M. Richardson
Brigitte Riddo
Edward C. Robb
Lawrence E. Robertson
Karen E. and Mark Robertson
Alan and Emily Robinson
CMSA Rocky Mountain Chapter
Justin and Melissa Rodriguez
Rebecca Rogers
Donald G. and Jeanne M. Rohner
Annette M. Rowland
Audie Rubin
Emanuel and Joanne Salzman
Oliver Sanderford and
 Kimberly O'Connor
Gail Saxton
Paul and Julia Scheele
Susan Scherer
Sofia Schlosser
Taylor Schollmaier
Adam and Stephanie Scoville
Thomas and Cheri Seeton
M. Bradley and Ruth H. Segal
Linda Semler
Lisa Sevcik
Kevin G. Shea
Sheryl K. Shelton
Jeffrey S. and Diane M. Shenberger
Daniel R. Shevlin
L. G. Shofner
Donald H. and Deborah J. Showalter
Sue L. Smallwood
Stanford and Dianne Smith
Terry Snyder
Laura Sorrell
Mark and Alicia Speer
Jonah and Katty Staller
John Steel and Bunny Freidus
Louis Stephan
Mark Stice
James D. Stillwell and Ann K. Boddum
Elizabeth Stoller
Celine Strohl and Timothy Kromer
Michelle Sturm
Terence Sullivan
Eileen and Joseph Talty
Janice E. Temple
Catherine Thome
Catherine Tierney
Giles D. Toll
Richard M. Trout
Leigh Truitt
Joan F. Urton
Claudia B. and Dennis P. Van Gerven
Dana M. Vernon
Jan Vilkaitis and Larry Routten
Edward J. Wagner
Thomas E. Wagner Jr.

Cheryl A. Walker
Daniel Walkes
Steven M. Wallace
Christopher M. Walsh
Jerome T. and Patricia A. Walsh
Virginia C. Walsh
Tamara K. Waltemath
Lynn Waterman-Blum
Darrrell Watson
Helga S. Watt
John A. and Alice F. Weeda
F. G. Westerman III
Ida Mae Whitcomb
Gregory J. White
John D. White
Brian and Loreta Whitney
Peggy Wilkins and Dave Gustavson
Valerie Williams
Timothy Williams
Gregory Wimpey
Karen Wolfe
Paul J. Wright and Pamela F. Tyrrell
Ray Wynnfield
Scott Youngman
Charles T. Zabel
Jim Zelenski
Robert M. and Margaret A. Zenn

\$100-\$249

Ronald Aarons
Colleen Abdoulah
Tracy Abell
Richmond P. and Joan L. Acker
Paul Acker
Jane Ackerman
Debra Aleinikoff
Charlotte Alexandre
Richard W. and Doris J. Allard
David Allen
Carol Lonergan Allison
Rebecca Allyn
Harmon and Janey Alpert
Sara R. Alt
Grace Ami
Shirley Amore
Fradene S. Andersen
Barbara J. and G.F. Anderson
Devonna Anthony
Mercedes Aponte
Joseph V. Applehans
Duane D. and Renee L. Aragon
Peter Arrington
John R. and Bertha A. Armour
Deborah Astroth
Kathryn I. Atencio
John and Frances Augenblick
Brian Baak
Herb L. Bacon
Patrick D. Bacon
Robert N. and Noreen J. Baker
Minnie M. Baldwin
Charles R. and Margaret M. Bandy
Russell Bangert
Jim Banman
Susan Bardwell
Nancy J. Barger and Linda K. Kirby
Mitzie R. Barnes
Patrick E. and Victoria S. Barney

Robert H. and Maeline A. Barnstable
 John H. and Carol B. Barrett
 Tamara Barron
 Paul S. and Sara Jane Barru
 Frederick C. Barth
 William Bartolomeo
 Susan Batenhorst
 Richard Bauman
 Frederick Baumann
 Norma E. Bayless
 Susan Beblavi
 Heather Beck
 Carolyn S. and Carolyn L. Becker
 Catherine Bedard-Bayne
 Thomas V. Bedingfield
 Sara J. Beery
 Susan Behrendt
 Tara M. Beiter-Fluhr
 Sally D. Bell
 Richard and Rebecca Benes
 Geraldine G. Benigsen
 Frank H. and Carla L. Bennett
 John M. Lebsack and K. Holly Bennett
 K. Charon Berenbaum
 Scott Bergren and Glen Eldringhoff
 Andrew N. Bernstein
 Terry K. and Ulla L. Berringer
 Larry T. Berryman
 Sarah Bettinger
 Francesco G. Beuf
 Christopher Bevilacqua and
 Megan Gallagher
 Trina and A.S. Bibbero
 Jason and Gillian Bidgood
 Christopher Bielinski and Jenny Geiser
 William E. Bierbach
 Roger G. Billotte
 Ronald Binz and Mary E. Donahue
 Jared Birdsong
 Francis and Joanne Blake
 Sara E. Blake
 Paul M. and Kari L. Blanchard
 Gerald L. and Ramona J. Bleser
 Caroline Bliss-Kandel
 Gary D. and Roberta G. Bloom
 Sharon M. Blum
 Margery Blumberg
 Jennifer K. Bobich
 Paul Bodek
 Joe and Gina Boggio
 David L. and Fara S. Born
 Alessandro G. Borsa
 Paul I. and Judith A. Bortz
 Nate Bradley and Lyndsay Ball
 Seth Bradley
 Anita Burki-Bragg
 Howard G. and Kathleen A. Brand
 Angela G. Brega
 Scott D. Brewer
 Latonia V. Bridges
 Roy and Benita Bridges
 Donese Brittingham
 Robert and Judith Brocker
 Shirley and Eric Brod
 Peter and Lori Bronk
 L. Michael and Jennifer M. Brooks
 Lois Brooks
 Morgan L. and Sue E. Brooks

Catherine Brown
 David R. Brown
 Douglas M. and Linda L. Brown
 Trudy B. Brown
 Valerie G. Brown
 Warren C. Brown
 Elijah Bruggeman
 Duane R. and Pamela R. Bruno
 Kenneth E. and Vickie J. Bruso
 Michael and Linda Bryan
 J. Kern Buckner and Gretchen A. Frey
 Patricia Buikema
 Robert L. and Christine E. Bullis
 Michael Burm
 Mari C. Bush
 Martha Bushnell
 Ron and Mary Butz
 Agnes P. Buzbee
 Judith L. Cacco
 Mary Ellen Caiati
 Kathryn Ann Cain
 Hugh and Susan Calkins
 Jennifer J. Campbell
 Kathleen M. Canclini
 Lorna E. Carey
 Jay and Nancy Carlson
 Roy and Susan Carlson
 Barbara L. Carpenter
 Josephine E. Carpenter
 Mary Carr and Robert F. Bruner
 Roger H. Carver
 Eileen Caryl
 Brian and Lisa Casey
 Jaclyn K. Casey
 Pauline Casey
 Katherine A. Cattanach
 Darrell and Ruthanne Cauley
 Susan Ceresa
 Douglas D. Chambers
 Thomas P. and Susan J. Chambers
 Richard M. and Gwen F. Chanzit
 Steve Charbonneau
 Victor O. Charbonneau
 Laurence and Denise Chartrand
 Mardi Chase
 Toan and Christina Chau

Federico and Mary Cheever
 Carl Brian Christianson
 and Jean Frances Blair
 Anne Marshall Christner
 Ford R. and Jessica C. Chruh
 Cynthia Churchill
 Joseph A. and Joyce A. Cifollilo
 Frances L. Ciliberti
 Tom and Barbra Clark
 John Clark
 Lonnie Clark
 Sarah A. Clark
 Thomas Clark
 Janet Clarke
 Thomas G. and Margaret A. Claspell
 Sheila M. Cleworth
 Matthew T. Cline
 Brent W. Coatney
 Richard Coble
 Bret Cogdill
 Richard Cohn and Susan Cooper
 Lewis Colgan and Ann Sullivan
 Charles V. and Carron L. Collins
 Stephen and Diane Collins
 Timothy R. and Anne B. Collins
 David and Stacy Colodny
 William Comerford
 Anne Coates Conaway
 James and Adrienne Condon
 Thomas Connell
 Laurence and Barbara Connors
 Peter M. and Amy C. Conrad
 Mollie Cook
 Paul F. and Lisa M. Cook
 Irene C. Cooke
 Teresa Marie Cooney
 Patricia Cordova
 David W. Corkill
 Mary Helen Coughlin
 W. Milton and Beverly Cowan
 James Coyle
 Richard J. and Judith A. Creswell
 Thomas and Paulette Crisman
 Timothy D. and Judith A. Crosby
 William E. Cross Jr.
 Galen Crowder



Eric L. Dady and Julia G. Barry
 Gillian Dale and Daniel P. Andersen
 Ruth Dalrymple
 Mary Lou Dalton
 Kim Daly
 Barbara Danielson
 Marc C. and L. Darling
 Barbara Davis
 Carol R. Davis
 Gregg R. Davis
 Michael D. Davis
 Judi Day and Becky Howard
 Patrick and Annette De Martine
 Clyde DeBello
 Linda Decoste
 Clarence and Kiyoko Dee
 Lisa and James Theard Deffner
 Margaret B. Deitrich
 Javier Delcastillo
 Magdalena G. Delgado
 Lynn Della-Betta
 Susan Demidovich
 Joseph Desantis
 Alan and Linda Dewey
 Arthur J. Diaz and Luella M. Walker
 John S. and Nancy L. Dick
 Clint and Jacqui Dietrich
 Bunny C. Dines
 Mark and Kim DiStefano
 Joanne Ditmer
 Paul and Susan Doak
 Daniel W. and Julie B. Dobler
 Stanton Dodge
 Andrea L. Doeden and Paul L. Tennery
 Kathleen M. Doherty
 Pauline V. Donder
 Paul E. Donohue and Pamela J. Shamburg
 Robert E. Donohue
 James L. Dorough
 Jim and Karen Doyle
 Susan D. Doyle
 Stephen C. Dreskin and June K. Inuzuka
 Richard W. Callow and Marcia T. Driscoll
 Ron and Amy Dryer
 Toni Duckett
 Duane Duff and Sandra Carter-Duff
 John P. Duffy
 Diane Dunn
 Leslie C. and Jay M. Dunn
 John D. and Julie B. Dutton
 Bernard G. Dvorak
 Martha Dyckes and Douglas Dyckes
 Jennifer Dyer
 Anne G. Eakin
 Grant M. Eastburg
 Karen Eastwood-Jacobs
 Leslie F. Ebert
 Stephanie Ebert
 Hugh G. Eccles
 David Echter
 Richard and Julie Eckert
 Harold Eden and RoseAnne
 Sandoval de Eden
 Gary W. and Maurine G. Edwards
 John J. and Mary E. Eisenbeis
 Jim and Beth Elland
 Paul D. Ellis
 Dr. Claudia Elsner and Daniel J. Ridgeway
 Beverly K. Emil
 Gary J. Emrich and Kathleen B. Andrews
 Earl A. and Candy S. Enix
 Margaret Eppler and J. Peter Titsworth
 Kimberley M. Erickson and
 Barbara J. Vossler
 G.W. Eger and Martha Jean Erickson-Eger
 Paul and Becky Erlendson
 Donald P. Esser
 Anne L. Esson
 Jonathan F. and Rosemary K. Esty
 David P. and Colleen T. Evans
 Don W. Fahrenbrink
 Richard C. Farley
 Lawrence R. and Elizabeth K. Feldman
 Cherry S. Fennell
 Larry and Carol Fenster
 Sarah B. Fey
 Sarah Fierce
 Susan and Victor Fink
 Jon Firooz
 Gordon H. Fleischaker
 John C. Flemming
 Christine Fletcher
 Randy Flipse
 Michael and Peggy Flood
 Miguel I. and Barbara A. Flores
 D. R. and Virginia Floyd
 Rachel Flynn
 Lisa Foreman
 Mary Lea Forington
 Lee W. Forker
 Jeff Forster
 Nathan Dean Foster
 Michael S. and Mary S. Frank
 Judith D. Franklin
 Jon and Doris Frazier
 Andrew M. Freeman
 Dr. Sharon Freeman and
 Dr. Stephen Freeman
 Anita Freimuth
 Robert G. and Candace J. Frie
 Charles M. Fry
 John H. and Janet R. Fuller
 Bill and Sally L. Fulton
 Dan I. Gabbay
 Wieslaw and Barbara Gadecki
 Elayne Gallagher
 Joyce L. Gammill
 David and Yvonne Garcia
 Richard B. B. and Labyota B. Garnand
 Alan G. and Sally R. Gass
 Harvey and Suzanne Gaylord
 Robert and Terri Gehler
 Marian P. Gelfand
 Kevin P. Geraghty
 Karen D. Gerlich
 Joseph M. and Sherill L. Giambalvo
 Ronald G. and Patricia A. Gianna
 Shawn L. and Mary M. Gibbs
 Andrew Gibson
 Gregory G. and Janice M. Gibson
 Scott E. Gibson
 Lisa Giddy
 Richard W. and Debra J. Gingras
 Scott Glander
 Judith Glazner
 Jonathan and Andrea Goldman
 Sandra R. Goldman
 Loren E. and Deborah F. Goltiz
 Leroy M. and Mary M. Gomez
 Eduardo Gonzales
 Stephen and Donna Good
 Mona S. Goodwin
 Lawrence and Silvia Gorski
 Lynn C. and John E. Gottlieb
 Hugh Q. Gottschalk
 Thomas A. Gougeon and
 Donna A. Middlebrooks
 Helen Gowan
 Wojciech and Elzbieta Grabowski
 Gene M. Graesser
 Greg J. Graff
 Allan W. and Joan S. Graham
 Scot Graham
 John W. and Myriam C. Grant
 William and Amy Grant
 David A. and Jennifer L. Grapko
 David Gray and Carolyn Blanchard
 Edward R. and Ruth A. Gray
 Richard E. Green
 William O. and Susan J. Green
 Dawn Greer
 Loren and Gail Griffin
 Bruce and Christy Griffith
 Dana L. Griffith
 Louis and Wendy Griffith
 Thomas P. and Karen P. Gross
 Stephanie Grover
 Deana L. Guenot
 Justin Guerra
 Dr. Beverly K. Gunst
 James A. and Kathleen B. Hass
 Thomas and Jill Hacker
 John A. Hagan
 Joseph and Lisa Hagan
 Louise Haggerty
 Margaret R. Hagood
 Elyse E. Hale
 Donald and Nancy Haldi
 Bruce and Mary Jane Hall
 Joseph W. Halpern
 Susan Halsted
 Simon J. Hambridge and
 Elizabeth A. Bayliss
 R. J. and Bellinda Hamilton
 Erica Hamilton
 Frank Hamm
 Russell S. Hampton
 Jean Hancock
 Gary L. and Elyse R. Hansberry
 Lowell H. Hansen
 Adrian and Patricia Hanson
 L. Victor Hanson
 Stephen D. and Janice L. Hanson
 Dolores and Ronald J. Harbeck
 Charl Hardesty
 Mark T. and Deborah L. Hardgrave
 Bert and Dara Hargrave
 Hunter C. and Gail L. Harrell
 A. Gordon Harrington
 Martin J. and Julie S. Harrington
 Douglas Hartman
 Ed Stein and Lisa Hartman
 Marc B. and Cynthia Winkler Haverland
 Philippa Hayward

Tim M. and Laura M. Hearlihy
Douglas and Marjorie Heath
Tom W. Heisroth
Tom Heisroth
Erica Heller
William Gene Heman
L. Michael Henry
Patrick Henry
John Herbert and Katherine Tamblin
Janice Hetland
Harold B. Heuer
Sigrid H. Higdon
Gary and Antonietta Hillsten
Joel and Marilyn Hirschboeck
Robert and Jan Hirschfeld
Alison J. Hirsh
Mary Hoagland
Hannah Hoch
Georgianne Holland
Paul D. and Mary D. Holleman
Michael and Harry Hollingsworth
Sandra Holstein
Herbert and Barbara Hoover
Patrick D. and Jill D. Hopkins
Matthew L. Hoppe
Joy M. Horan
Sandra Anne Horton
Andrew Horwitz
Sue P. Houghtaling
Larry House
Howard Huber
Marisa Hudson Arney
Frederick Hull
K.R. and Julie M. Hunter
Donald E. and Dee H. Huntington
Rachel Hutson
Jeremy R. Hutt
Webster and Carol Ireland
Vahid Ivojevic
Jeffrey A. and Patty S. Jaacks
David and Paula Jackman
Honora I. Jacquez
Faith E. James
John R. and Marilyn R. Janczy
Don W. and Jerrie R. Janssen
Brian Jaquette and Brandy Allen
Lori Jarrell
Thomas W. and Marlene J. Johancen
Derek D. and Julie T. Johns
Bill Johnson
Emmett M. and Jean H. Johnson
Gregory and Vicky L. Johnson
Kim D. Johnson
Lee H. and Jessica M. Johnson
William and Marcia Johnson
Peg J. Johnston
Audrey L. Jonas
Wade C. and Eleanor S. Jones
Brenda Julander
Bill Juraschek
Dylan Taatjes and Jessica Kahn
Anne Kalush
Mark Karnuth
Michael and Kathy Kasher
Mark and Pam Kastler
Richard W. Kautt
Joanne Marks Kauvar
John T. Kearns III and Lori L. Kearns

Patty Keck
Marita Keeling
Craig Keim
Sara Keith
James S. and Patricia A. Keller
MaryJo Keller
Donald H. and Geraldine A. Kelley
Grover and Wilma Kelly
Laurie S. Kelly
Nora V. Kelly
Dr. Richard Kemme
Adam Kemper
John S. Kendall
Robert M. and Nancy N. Kenyon
James M. Kerley
Shaun Kettunen
Catherine Kieilty
George and Jocille Kienlen
Paul and Kathleen Kimball
James B. and Barbara K. Kimble
Ira C. King
Janice M. King
Lawrence King
Maria King
Beth Kiovsky
Michael A. and Lynn M. Kirsling
Marcie Kittay
Barrie G. Klaitz
Chas and Debbie Klisis
Kathryn L. Kluck
Deborah J. Knapp
Duane C. Knight Jr.
Delmar H. Knudson
George A. Kohake
Mary J. Kohl
Russell M. and Paula J. Kopperud
Patrick W. and Eleanor A. Kosmicki
Andrew T. and Judy C. Kramer
Russ and Fran Kraus
David J. Krieger
Anne-Maria Kropf
Robert and Adele Krumpholz
Margaret Kruse
Daniel J. and Diana L. Kubik
Keith J. and Quinn Kulesa
David Kumpe and Rosemarie
Wipfelder Kumpe
Henry and Melanie Kusumi
Arthur S. and Carolyn M. Kwerneland
Walter Kylander
John and Helga Lafolette
Robert A. Langdon
Jane H. Lanners
Robert and Donna Lapidus
Erika V. and Kovas I. Lapsys
Carla M. LaRosa
Jonathan Larson
Gary and Lorraine Lasswell
Marissa Latta
Robert W. Rozen and Sherri J. Laubach
Richard A. and Patricia M. Laughlin
Aileen Law
Meg Laws
Karl and Monika Leaf
Sae M. Lee
Nicholas E. Lefferts and Anne M. Hansen
Stephen and Susan Lehman
John M. and Patricia C. Leibman

James Leiken and Candice Chia
Ruth H. Leisle
Laura Leslie
Joseph P. Levi
Paula R. Levin
Karen Levinbook and Charles Davis
Alan and Leslie Levine
Samantha Levine
Stephan R. Levy
Peggy B. Liao
Fred and Cheryl Lieblich
Marilyn S. Lindenbaum
Jeanne Lisle
John E. and Karen I. Litz
John A. and Sharon C. Lobus
Dinah Loerke
Donald R. Logan
Jeff Logan
Jeanne Loges
Deborah Lorentz
Georgia L. Long
Justin Long
Larry J. Lovison
Hazel Lowe
Rustin and Susan Lucken
Burke and Susan Luerssen
Rachel Lund
Jonathan and Jennifer Lurie
Barry and Jenny Lutterman
Judith H. Lyke
David B. Macfarlane
David B. and Janet D. MacKenzie
Patricia MacMillan
David M. Maganza Jr.
Hugh F. and Cristina H. Mahon
William and Karen Malabre
Samuel D. Mamet and
Judith B. Cassel-Mamet
Douglas Mandic
Charles B. Manning
Laura Manthey
Babette Markey and Arthur Markey
Anthony Marquez
Dennis R. and Ilka T. Marsh
Carrie B. Marshall
Rick and Ann Marshall
Stephen A. and Mary K. Martin
John A. and Barbara C. Martinez
Michael and Yolanda Martinez
William J. Martinez and Judith C. Shlay
Richard F. and Lilian E. Marvin
Bryce Matthews
Peter and Lois Mayerson
Autie McCann and Lexi Sanders
Mike McCann
Ann and Lon McCarley
Kassie A. McClintock
Kelley G. and Anne P. McCready
Deborah A. McCreery
Mike and Lori McCue
Worth R. McCue
John P. and Jeannette C. McDonnell
Jean Ann McDowell
John E. and Judy L. McEvert
Denny McGihon
Janet McIntyre
J. Reese McKay
Mark R. McKisick

Dustin McLemore
Deborah McMillen
Jon and Beverly McNutt
Dolores P. and William A. McRae
Georgina M. Meagher
Marcia Mellick
Barbara J. Menard
Michael and Debra Menze
Evan Metcalf and Mary Crawford
Ronald C. and Jean A. Meyer
Bruce C. and Beth P. Michalowski
Richard and Patricia Midtbo
Mari Mier
Betty M. Miller
Elizabeth Miller
Jacquelyn Y. Miller
York E. Miller
Krystie Millich and Terry Read
John H. and Arminda M. Milligan
Judith J. Minderler
Mike Misgen
George W. and Susan A. Mitchell
Inder Mohan and Reva Nayyar
Joanna E. Moldow
Lawrence E. and Cynthia L. Monley
Jule Monnens
Linda Montalvo
Bruce R. and Deborah E. Montgomery
Richard E. and Angela J. Moore
Tom B. Moore
Douglas G. Moran
Wallace G. and Margie A. Morill
Jim Morris
John R. and Rosemary P. Morris
Margaret Morrissey
Jeff and Peggy Morse
Sheryl Mosbarger
Miike N. and Mary A. Moscoso
Rossann Mosher and Jeff Jordan
Mary Louise Mosley
Jill Mozer
David K. Mueller and Connie R. Kowal
Carol Mullins
Richard L. Munoz
Todd and Sue Munson
Edmund P. and Genevieve M. Murphy
Elizabeth M. Murphy
Lance R. and Karen K. Musselman
Adam Myers
Ann Nagel
Robert and Jane Nagel
Harold S. Nelson
Sigurd J. and Dianne E. Nelson
Wendell and Margery Mae
Steven and Lydia Neptune
John and Susan Neumeier
Mark Newby
Gary E. and Katherine D. Newell
Mai Nguyen
Honey Niehaus and Paul Caouette
Corey E. Nikoloric
Julia Nofsinger
Maurice L. and Joanne K. Noll
James and Elizabeth Nollenberger
Kirsten Nordenholz and Andrew Martin
James and Paula Nordstrom
John Novak
James G. and Helen L. Nussbaum

Patricia Oakley
Carolyn O'Brien
William J. and Judith M. O'Brien
William Odell and Phyllis Odell
Schubert M. and Joyce E. Ogden
Charles Ohlson
Cheryl R. Oliver
Kent Olsen
Eric A.J. and Jane M. Olson
John P. Olson
Suzanne Olson
Robin L. Ortiz
Gabriel Ostriker
Neil D. and Sharyn E. O'Toole
John and Carla Owsley
Joshua Pace
David Packer
John Paller
Mark and Pauline M. Palumbo
Gregory C. Pappas
Hilary L. and Mathew C. Pargin
Heinz G. Park
Kevin G. and Holly W. Parker
Mercedes B. Parker
Thomas and Lynn Parker
Jeffrey Parris
Bruce C. and Patricia A. Paton
Joshua Patton and Hansi Hoskins
Dot and Joe Payne
Jeffrey and Jessica Pearson
Joan P. Pechman
Mary Rice Peckham
Mary M. Peel
Mark F. Pelz and Alison M. Steiskal
Kerry Perloff
Barbara Perzanowski
Donald V. and Carol Peters
Jennifer Petit
Carol A. Pfaff
David P. and Elizabeth Ann Phillips
and Richard L. Phillips
Charles and Elfriede Pickell
Harald and Karen Pigler
Charles H. and Karen M. Pless
Donald and Jennifer Plum
Fay Plummer
Adam and Anne Poe
Robert and Rae Polis
Patty A. Polsky
Pambos and Susan Polycarpou
Matthew and Julie Pontiff
Bret R. and Marlain E. Poole
John E. Popovich and Nancy L. Juday
Deborah Porter
Jerry Porter
David M. Posner and Helen K. Buchsbaum
Jeanne Pote
Harold A. Pratt
Ronald and Barbara Pred
Caren S. Press
Marinelle Pribble Scott
Laurie Priddy
Joseph and Lynne Ptacek
Richard H. and Phyllis A. Purdy
James P. and Sheila T. Quintana
Kate Raabe
Jay Rabinowitz
Sheri Raders

Deborah Raehl and Mary Freeman
Glenn and Cora Randall
Michael L. Miller and Susan Ranson-Miller
Donald E. and Linda B. Ranta
Robin Rasco
Deborah Menter Rasor
Matt Ratterman and Janet Layne
John C. Rayner
Philip Reed
Donald M. and Zoe W. Reese
Jenny Reese
Gerald J. Reichardt
Gayle A. Renick
Richard Replin and Elissa Stein
Emily Nicole Resetco
Eli and Adina Reshotko
Matthew and Helen Resnik
John P. and Susan J. Reuter
Marian and Arleta Rewers
Andrew Rex
Eddy Reyes
Gene E. and Nancy M. Richards
Arthur D. and Maria M. Richmond
Jeffrey Rideout
John and Nancy Riede
Christine Riggins and Daniel Mickelberry
Steven and Joan Ringel
Barbara E. Rino
S.L. and P.J. Ritter
Andrew and Karen Ritz
Julia Rivera
Michael J. Roark
Richard D. Roark
Janet L. Robbie
Martin D. Robbins
Sharon Roberson
James A. Roberts
Richard S. and Priscilla H. Roberts
Karen Rodriguez
Amy K. Rogers
Erica Rogers
Linda C. Rogers
Ralph and Kathryn Rolan
Al W. Rooney
Francis J. Rooney
Earl and Marci Roper
Robert Roper
Cecile S. Rose
Dr. Edward F. Rosenfeld and
Debra G. Rosenfeld
Joseph R. and Pat S. Ross
John C. Roth and Diane L. Haskin
Kay Roth
Nancy Rothbaum
Jack R. and Lisa B. Rouff
Dennis E. and Cecilia M. Roundtree
Delbert and Joann Roupp
Mickey S. Rovner
Karen D. Royal
Linda Rubin
Paul Rubner and Vicki Jensen
Kenneth D. and Jannette L. Rumph
Mary Keely Runge
Lee Rusakov and Margarita Guarin
Carrolle A. Rushford
Kenneth J. and Susan L. Ryerson
Benjamin I. Sachs and Debra R. Knapp

Matt Salbenblatt and
 Marilyn Smith Salbenblatt
 Donna Samuels
 Stephen and Patricia Sanborn
 Keith B. and Joan E. Sanders
 Donald G. and Margaret M. Sandner
 Dennis R. Sanger and
 Cynthia A. Vaughan-Sanger
 Shawn Sapp
 Harold Sargent
 Joseph G. and Tracy A. Sargent
 Edison and Aida Sarmast
 Raymond and Suzanne Satter
 Jenny Scanlon and Connie Lane
 Sandra S. Schaffer
 Sandra K. Scherer
 Richard and Susan Schermerhorn
 Carl and Carolyn Schiele
 Rebecca M. Schilling
 Stuart and Ida Schneck
 Cal and Elaine Schofield
 Lynne L. Scholfield
 Jay and Christy Schoon
 Betty J. Schranck
 S.A. Schraufnagel
 Anne L. Schreiner
 Lawrence J. and Judith F. Schulman
 Jay Want and Martina Schulte
 Rick and Cindy Schumacher
 Joshua Schwab
 Daniel O. and Calista A. Schwartz
 Saul S. and Julie B. Schwarz
 Jen Schwem and John Ekeberg
 Ronald L. and Nancy O. Schwiesow
 Richard M. and Lorie A. Schwindt
 Jo Scudamore
 Marian C. Seder
 Yasser Sedhom
 David A. and Bette L. Seeland
 Nancy Seibolt
 Chris Sekirnjak
 William R. and Barbara C. Sharp
 Elizabeth A. Sharrer and Zane H. Tuta
 Howard Shaw
 Robert and Irene Shea
 Margaret Sheehan
 Charles E. and Shirley A. Sheets
 Steven P. and Brenda L. Shepard
 Susan K. Shepherd
 Susan B. Sheridan
 Mark Sherock
 David and Cheryl Showers
 John W. Shupe
 Robert J. Siano
 Troy Sibelius
 Linda Silva and Family
 Marilyn Silva
 Ingrid Silverman
 John M. and Barbara J. Simon
 Emily Sims
 Jennifer A. Sivertson
 Darla L. Skidmore
 Nickolas and Karen Skifalides
 Sam S. Sloven
 Alana Smart
 Bruce G. Smith
 Glenn E. Smith
 Jack L. Smith
 John V. and Elaine J. Smith
 Marjorie Smith
 Stephen A. and Marsha J. Smith
 Roy Edward Smith and
 Kimberly Minshall Riley
 Scot N. Smith
 Susan Mackay Smith
 Virginia Snow
 Holger Soderstrom
 Craig L. Sommers
 Gregory J. Sorensen
 Michele Sorensen
 Laura Sorrell
 Matthew A. and Jennifer A. Spampinato
 Ellen P. Spangler
 Ronald E. Spears
 Sandra L. Spencer and
 Thomas S. Poindexter
 Glenn E. Spring
 Nancy Isberg Sproule
 Patrice A. Spurck
 Celeste and Dave St. John Larkin
 Robert and Kirsi St. Marie
 Harold J. and Nancy L. Stalf
 Elisa Starble
 Constance and William Starr
 Kathleen L. Starr
 Esther Starrels
 Steven J. and Kristina S. Stern
 Ralph J. and Frances M. Stern
 Barbara E. Sternberg
 Cynthia Stevens
 Mary L. Stewart
 Terry Stewart
 J. Paul Stillwell
 Michele Stillwell-Parvensky
 Robert N. and Nancy A. Stocker
 Paula Stokes
 Nathaniel Stone
 Michael Stonehouse
 Mary Anne Strasser
 Amy Strickland
 Francis J. and Sylvia M. Sullivan
 James E. and Barbara A. Summerton
 Richard and Carolyn Sunderland
 Jim and Suzanne Swanson
 Camelia Swift
 Cle C. Symons
 Stephen R. and Beatrice W. Szadokierski
 Charles P. Szymczak and Mary L. Brinks
 Robert H. Tabares
 Richard Taft
 Tony and Florence Tam
 Donna Tanner and Albert Lubran
 Carol J. Taylor
 Donna Farrell Taylor
 Daniel and Sheila Teitelbaum
 Diane H. Terrell
 Robert P. and Sue S. Thibault
 Stephen W. and Lee H. Thomas
 Lisa M. Thompson
 Gwen Thornton and David Sorenson
 A.B. Thoroughgood III
 Hugh Thurnauer Jr. and Eileen Thurnauer
 Christene A. Timmons
 Karen Timmons
 Robert C. Tobias
 Sunil Murray and Allison Tomaselli
 Steven L. Salter and Karen A. Tomb
 John R. Torres
 Penny and Fritz Trask
 William Tribble
 Robert C. Tripp
 Thomas J. and Debra L. Tripp
 Tony Troxell
 Aimee Truesdale
 Leigh Truitt
 Rebecca Truitt
 Conrad S. Tseng and Carmel L. Giles
 Michael B. and Mary R. Tully
 Bette Tunnell
 Charles Elcon Turley
 Joseph L. and Lana M. Turner
 Kimberley H. Tyson
 Ann F. and Jonathan P. Ungerland
 Antoine and Elizabeth Valot
 Michael Van Gilder
 Katharine L. Varnes
 Gretchen S. Vasquez
 Fariborz and Leili Vassighi
 Joan Roehrig Vater
 Barry G. and Becky E. Venetta
 James Laurie and Jane Vennard
 David and Margaret Ann Vogel
 Stephen D. Vogler
 Terry R. and Jo Ann L. Vogt
 Charles A. Volkmann
 Sue Volle
 Rita R. Vollman
 Arthur and Megan Volmer
 Lawrence E. and R. Cheryl Volmert
 James and Ruth Vuicich
 Michael G. Wade and Ruby J. Martinez
 Thomas E. Wagner Jr.
 Thomas H. and Deborah S. Wagner
 Edward and Patricia Wahtera
 Erika Walker and Don Weinschenker
 Tammy Ann Wallace
 Peggy Walling
 M'Lou Wallis
 Gerald and Jaculin Wankum
 Fred W. Ward
 Susan K. Warner
 Martin T. and Catherine A. Waters
 Laura Waterworth
 Michael L. Wear
 Beatrice Weaver
 Galen and Carolyn Weaver
 Jill and Evan Weaver
 Nancy Weaver
 Mary J. Weber
 Michael L. and Sally R. Weber
 John A. and Alice F. Weeda
 James M. and Susan L. Weichselbaum
 Darren Weiner
 Jennifer Welborn
 Mary V. Wells
 Robert J. and Mary O. Werner
 Steven A. and Catherine N. Werner
 John and Karen Weslar
 Ronald E. and Marlies D. West
 Robert J. and Christine A. Wester
 Gene Weston
 Anna R. Weyerman
 Leanne D. Wheeler
 Stanley E. and Laurie Ann Whitcomb

Jack A. White
 Susan L. Whittlesey
 Eric H.A. and Michelle L. Whyte
 Edward H. and Nancy L. Widmann
 William H. Wierman
 Steven and Sandra Wiersma
 John P. Wiggin and Mary Jane Peace
 Stephen Wiggins
 Mary Wilham
 Roger C. Wilkerson
 Arthur O. Wilkonson
 Lynn B. and Elizabeth I. Willcockson
 Gordon Williams and Christine Bentson
 Michael Williams
 Lyle and M. Claire Williamson
 Diane Willmann
 Mahtab Wilsey
 Judith and Kenneth Wilson
 Kevin G. and Diane T. Wilson
 Dennis J. and Mary Lou Wilwerding
 Laura Wing
 Margo Wingate
 Sara D. Winter
 Tim Wise
 Albert H. and Rebecca F. Woehrl
 Richard Wohlgenant and
 Joan Wohlgenant
 Brooke Wolf
 Randall J. Wolf
 Marcella K. Wolfe
 Stephen J. Wollenhaupt
 Robert D. Woodruff
 Betty J. Woods
 James Woods and Christine
 Woods-De Rael
 Dean A. and Marsha F. Woodward
 Joan Woodward
 Arthur Wouk
 Marjorie I. Wright
 Patricia Wynne
 Frances Wyrick
 Zahi Yaafouri
 Patricia Yancey
 Shaun P. and Debbie L. Yancey
 Shihui Yang
 Jennifer L. Yarbrow
 Rhoda Yeager
 Barbara A. Yondorf
 Wendy Yondorf and Rocco Alberico
 Gwen Young
 Ronald C. and Ann S. Young
 Jacalyn Youngblood
 Diane Yount
 Ellen Yu
 Isabella Zaczek
 Gordon and Marina Zellner
 Robert M. and Margaret A. Zenn
 Jack D. and Sally A. Zilis
 Amanda M. Zimmerman
 George E. and Linda M. Zoetewey
 Loren T. and Ann L. Zweig
 Pamala Zwickl

Volunteers & In-Kind Donors

AA Optical Company
 Evan Abbott
 Craig Adams
 Adams County Probation

Aeropostale
 Aginfolink
 Shayna Alexander
 Sheree Alfonso
 All Saints Lutheran Church
 All Souls Catholic School
 Altair Eyewear
 Amcon Laboratories
 Jeff Andrews
 Justin Arbuckle
 Greg Arfsten
 Army and Airforce Exchange Services
 Stephanie Arteaga
 Brian Bacak
 William Bagley
 Joan Barker
 Neiel Baronberg
 Holly Barrett
 Theo Barychewsky
 Julia Bates
 George Bayer
 Beckwourth Outdoors
 Stuart Bedell
 Jan Beezely
 Joanne Bell
 Ben Franklin Academy
 Georgianne Bender
 Stephanie Bender
 Jennifer Berg
 Susie Berry
 Ann Bingaman
 Sue Blakeslee
 Leara Blanchard
 Robert Blume
 Kathy Bond
 Melissa Bordwine
 Louise Boris
 Ron Bourgault
 Liz Bracher
 Cheyenne Bradley
 Maxine Brady
 Barbara Brant
 Breathe Denver LLC
 Nikki Brezny
 Bridge Liguattec
 Londa Briggs
 Eric Broecker
 Shawn Brogan
 Darnell Brooks
 Ruth Brooks
 Jay Brown
 Sylvia Brown
 Michael Bruce
 Dorian Brugger
 Buckley Air Force Base
 Russ Burcham
 Devon Burchfield
 Hank Buschmann
 Carly Byrne
 Peter and Patricia Cady
 Peter Calamari
 Geraldo CalderaRosales
 Keren Call
 Shannon Campbell
 Lisa Carlson-Marks
 Paul Carollo
 Krystal Carter
 Jaci Casey

Robbi Casey
 Ruthanne Cauley
 Lisa Celania
 Lisa and Paul Cernick
 Barbara Charnos
 Ila Christian
 Chubby's Mexican Food
 Cynthia Churchill
 David Cline
 Kim Clonts
 Coleman
 Kelly Collins
 Colorado Cataract & Laser
 Colorado Education Association
 Kathleen Conneen
 Molly Conneen
 Joseph Connelly
 Vickey Conner
 Audrey Coon
 Sally Cox
 John Cross
 Patience Crowder
 Crystal and Bob Crowley
 Dustin Cucci
 Andre Cunningham
 Christine Cutler
 Faith Dahl
 Keith Davies
 Ashleigh Davis
 James Davis
 Judi Day
 Katherine DeCamp
 Erin Degutis
 David Dellinger
 Delta Christmas Group
 Delta Zeta Sorority
 Diane Dennehy
 Dean and Melissa Densmore
 Dependable Cleaners
 Carl Desantis
 Diana DeSantis
 Vincent DeShazer
 Theresa Dewey
 Eli Diamant
 Kim DiStefano
 Paul Docktor
 Victoria Dozois
 Elizabeth Duhegrahm
 Jennifer Duncan
 Lupe Duran
 Miriam Edwards
 Stanley R. Eilert and Paula G. Padilla
 Dr. Eric Eisenbud
 Greg Ellis
 Endeavor Academy
 Jeff Erb
 Jason Erickson
 Eye Surgery Center
 Jill Farnham
 Ed Farrell
 Jennifer Fayollete
 Christopher Fellenz
 First Plymouth Congregational Church
 First Universalist Church of Denver
 Cheryl Fiscelli
 Nancy Fitzgerald
 Amanda Fitzsimons
 Rebecca Flores

LaTonya Ford
 MaryLea Forington
 Jonie Friend
 Front Range Community College
 Joel Fuchs
 Gallegos Real Estate
 Alexia Galvan
 Soumya Gangopadmyay
 Connie Giarratana
 Ria Gill
 Girl Scout Troop No. 2811
 Judy Glazner
 Ben Schumacher and Allison Gleichman
 Golden Vision Clinic
 Alex Gonzalez
 Konstantin Gradushy
 Kathy Graham
 Phyllis Graham
 Anne Griggs
 Dan Grossman
 Amber Guildner
 Anna Gutierrez
 Jessica Gutierrez
 Kitty Haas
 Shelia Hancock
 Jack Hanf
 Jerry Hansen
 Scott Harpins
 Meredith Harris
 Paula Harrison
 Gisele Harvey
 Nancy Hatch
 Havern School
 Harrison Hayes
 Deb Hibdon
 Highline Vision Center
 Hi-Performance Wash Systems
 Teresa Holden
 Robert Homes
 Homestead Elementary PTCO
 Fiona Horgan
 Jillian Horowitz
 Mike Horvath
 Jeremy Hotsenpiller
 Housing Investment Trust
 HRSA
 James W. Hubbell
 Ronald Hutchinson
 Amber Jaitrong
 Dawn Jaitrong
 Gary Jamell
 Lori Jarrell
 Barbara Jenkins
 Carol Jenkins
 Monika Jennings
 Jimmy John's
 JLS Landscaping
 Denise Johnson
 Michelle Johnson
 Tom Jones
 Debra Judy
 Kaiser Permanente
 Jill Kelley
 John Kelly
 Tim Kelly
 Richard Kelmenson
 Ken Caryl Vision Center
 Kenmark Group

Kentwood City Properties, LLC
 Mary Kershner
 Phillip Kraatz
 Kenneth T. and Judith B. Krawiec
 Gayle Kreek
 Gina Kremer
 Joseph Kuchta
 Benjamin Kuruvila
 Lois E. Lair
 Cynthia Lamb
 Dottie Lamm
 Elana Le Coq
 Robert Lederer
 Kara Ledford
 David A. Lee
 LaFawn Lee
 Travis Leiker
 Carey LeJeune
 Hollie Lethwaite
 Amber Lewis
 LexisNexis
 Peggy Liao
 Randle Loeb
 Uyen Loewald
 Michelle Long
 Karen Lowe
 Maria Lucero
 Kristin Lundgren
 Janet Lurie
 Madison Capital Management
 Faye Maguire
 Sarah Mahalik
 Maid In The Shade, LLP
 Betsy Major
 Angie Malpiede
 Jessica Manley
 Laura Manthey
 Debbie Maples
 Marchon Eyewear
 Andrew Maroncelli
 Brittany Marquez
 Denise Marquez
 Ray Marquez
 Stephanie Marquez
 Cynthia Martin
 Mike Masse
 Nancy Mavon
 Mandy May
 Tom May
 Jamie Maynard
 Gillian McCune
 Colin McDonald
 Kitty O'Dell-McPherson and
 David Roy McPherson
 Christine Mendoza
 Phillip and Lori Menicos
 Jynx Messacar
 Stephanie Michas
 Ron Mikelson
 Emily Miller
 Jacquelyn Miller
 Richard Miller
 Susan Miller
 Suzanne Miller
 David I. Milner
 Kirsten Morgan
 Alexandria Mosely
 Ellen Muench

Karel Munsey
 Toren Mushovic
 Harvey Nakayama
 Namaste Pure Design Salon
 Judy Napoli
 Tom Naughton
 Joel Neckers
 Scott Neckers
 Kristi Neece
 Andrea Nelson
 Donald Neufeld
 Rachel Newbold
 Taylor Newhall
 Patricia Norris
 Olive Garden
 Elaine Olson
 Melinda O'Rourke
 Dave Otto
 Brittney Paiz
 John Pappas
 MaryJane Peace
 Michael Pearl
 Jon Pederson
 Kris Peel
 John Perry
 Anastasia Petkova
 Joann Petramala
 Abigail Pfeiffer
 Michael and Kristen Phillips
 Graham Phipps
 Pilates of Cherry Creek
 Debbie Pizzoferrato
 Jerry Pluss
 Rick Pollick
 Brandon and Alicia Prescott
 Tess Preston and Linda Hightower
 Loryn Preuitt-Parks
 Pam Pritzel
 Lindsay Progar
 PS Audio
 Michael Purdy
 Racines Restaurant
 Tanya Ragland
 Genevieve Randall
 Red Book Solutions
 Joseph Reed
 Kathleen Reger
 T. R. Reid
 Revolution Family Worship Center
 Meshach Rhoades
 Jamie Richards
 Lydia Riegle
 Steve Risely
 Andrew Ritter
 Riviera Motel
 Roberts Elementary School
 Alan Robinson
 Augustine Rodriguez
 David Rodriguez
 BroAugustine Rohde
 Cherokee Ronolo-Valdez
 Root Down
 Brad Roth
 Amy Rothbaum
 Yanita Rowan
 Brenda Russell
 Sue Ryerson
 Karen Saboi



Dawn Salamon
 Erin Salehiamin
 Salon 188
 Rebecca Saltzman
 Michael Sarche
 Charles Savage
 Susan Savage
 Karen Savoie
 Lee Schelonka
 Lorraine Schewbach
 Dana Schmah
 Corrine Schraufnagel
 Sue Schroer
 Carol Schrott
 Annie Schulte
 Aubrey D. Schwenk
 David Scott
 Lacy Scott
 Donna Senn
 Suhair Shawar
 Evan Siegel
 Silver Dollar Optical Co.
 Marsha Singer
 Sisterhood Congregation Emanuel
 Sleep Tight Colorado
 Suey Smallwood
 Janice Smit
 Larry Smith
 Marsha Smith
 Thomas Smith
 Jim Smyth
 Thomas Snyder
 Julie Sobetski
 Sock-it-to-Em Campaign
 Liz Solano-Galvan
 Joshua Solomon
 Ashley Sonnenberg
 Ann Sookswat
 Debbie Sosias
 Source Office Products

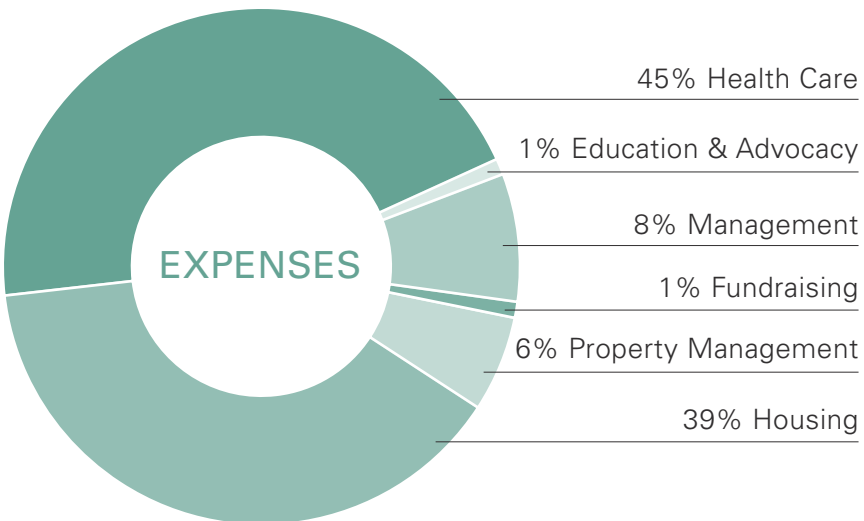
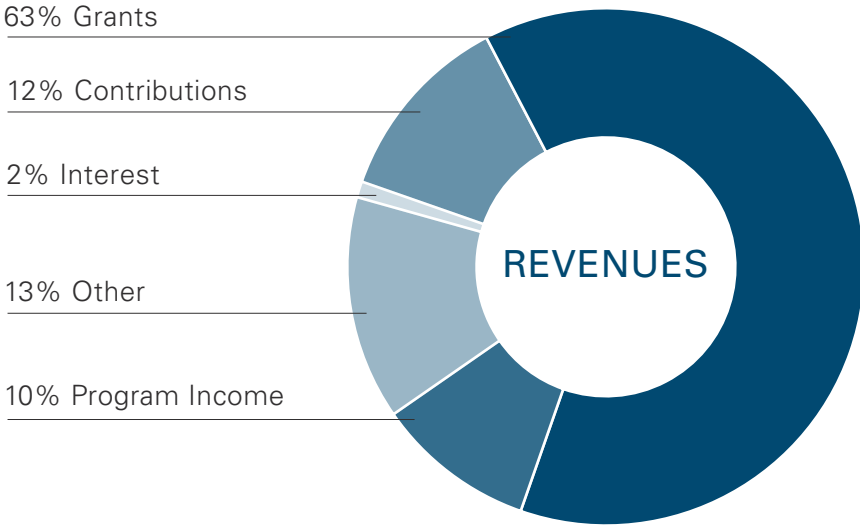
Southeast Office Supply
 Larry Spivack
 Sonny Stoen
 Robert Stofac
 Cynthia Strecker
 Jay and Laurie Swihart
 Audri Talmadge
 Chris Taravella
 Cynthia Tarkanian
 Malcolm Tarkanian
 Amy Taylor-Tuma
 Corky Terry
 Julie Thomas
 TaRhonda Thomas
 Cheri Thompson
 Andrea Tipton
 Jennifer Titus
 Julie Tomlinson
 David Trotter
 Jose Trujillo
 Trust Company of America
 Petra Ulrych
 Larry Underwood
 University of Colorado School
 of Dental Medicine
 U.S. Bank
 Lonna Vanhorne
 Gloria VanSloun
 Vascular Institute
 Juliana Vasquez
 Roxanne Velasquez
 Daria Vigil
 LoAn Vo
 Laura Vriesman
 Claire Walker
 Lee Weidenfeller
 Rodney and Kellie Weikert
 Maureen West
 West Middle School

Marjorie Westwood
 Leanne Wheeler
 Wallace White
 Amy Wigginton
 Samantha A. Williamson
 Judith Wilson
 Ken Wilson
 Nicholas Wilson
 Bill Windsor
 Jim B. and Judy J. Winston
 Annie Wohlgenant
 Joe and Kate Wolters
 Sharon Yenglin
 Bill and Joan Youmans
 Jerry Zander
 Phil Zavala
 Ross Ziev
 Zinke Knoebel Hair Studio

The Coalition is grateful
 for all gifts. We were
 fortunate to have
 many more generous
 supporters than
 could be recognized
 in this publication.

Consolidated Statement of Activities

DECEMBER 31, 2013



Colorado Coalition for the Homeless
Renaissance Housing Development Corp.
Renaissance Property Management Corp.
Renaissance Pizza LLC
Stout Street Development Corp.

Year Ended December 31, 2013

REVENUES

Private Contributions	5,360,086
Federal, State and Municipal Grants	28,773,423
Program Income	4,436,342
Other	6,170,928
Interest	865,546
TOTAL REVENUES	45,606,325

EXPENSES

Program Services:

Health Care	19,236,752
Housing	16,435,525
Property Management	2,339,225
Statewide Education & Advocacy	341,888

Total Programs **38,353,390**

Supporting Services:

Management	3,304,941
Fundraising	695,530

Total Support: **4,000,471**

TOTAL EXPENSES **42,353,861**

Increase (decrease) in Net Assets 3,252,464

Net Assets December 2012 **26,556,591**

Net Assets December 2013 **29,809,055**



HOW TO HELP

Support the Colorado Coalition for the Homeless and help provide life-changing health care, housing, educational, and employment programs across Colorado. The Coalition, established in 1984, dedicates **91%** of every dollar raised to client programs and services.



2111 CHAMPA STREET
DENVER, CO 80205
303.293.2217
WWW.COLORADOCOALITION.ORG

